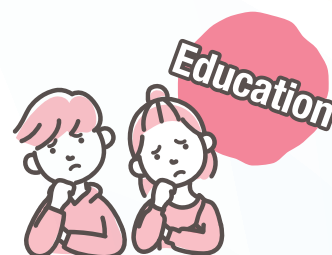
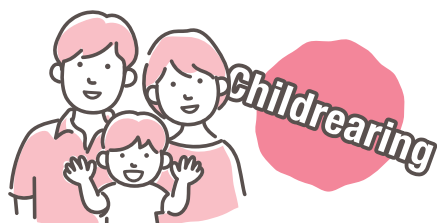


FREE
Just drop by!

KOBE
CITY of DESIGN

If you are worried about your livelihood

～ You can feel more at ease during the New Year holidays ～



Food & Support Kobe

FOOD SUPPORT KOBE

— An event to distribute groceries and daily necessities —
for the end of the year

Anyone who is a resident of Kobe and struggling with daily needs because of increasing prices and Covid-19 can come to this event.

First-come
First-serve

**Free
Groceries
Corner**



First-come
First-serve

**Free
Daily Necessities
Corner**



First-come
First-serve

**Counseling
Corner**



— Date, Time & Location —

Wednesday,
December 27

13:00～19:00 (Final entry/18:30)

PATIO Hall (Suma PATIO, Health Bldg. "KENKOKAN" 3F)

First
500
people

Thursday,
December 28

13:00～19:00 (Final entry/18:30)

Kobe Sanbo Hall, 1F Large Exhibition Hall

First
1,500
people

 **Organizer: Kobe City**



●Inquiries:

Website : <http://foodsupport-kobe.com/> Email address : info@foodsupport-kobe.com

Kobe City General Call Center : TEL 0570-083330 or TEL 078-333-3330 FAX 078-333-3314

(Available every day of the year 8:00～21:00)



Anyone who is a resident of Kobe and struggling with daily needs because of increasing prices and Covid-19 can come to this event.



If you are worried about your livelihood

FOOD SUPPORT KOBÉ

Food & Support Kobe — An event to distribute groceries and daily necessities for the end of the year

First-come
First-serve



Free Groceries Corner

Everyone who fills out the survey will be given a bag containing cup noodles, pasta, and retort food. There will also be bags of rice.

- PATIO Hall : First 500 people
- Sanbo Hall : First 1,500 people

* Available while supplies last.

First-come
First-serve



Free Daily Necessities Corner

Visitors will be given up to 3 daily necessity items, such as toilet paper, toothbrushes, and sanitary products.

* Available while supplies last.

First-come
First-serve



Counseling Corner

(About 20 min./session)

You can receive counseling from specialists about employment, living expenses, rent, loans, divorce, and other legal matters.

- General Consultations (Living Support Desk, Council of Social Welfare)
- Employment Consultations (Hello Work)
- Legal Consultations (Hyogo Bar Association, Green Co-op Hyogo)

* Due to limited time, the main focus of the consultations will be on hearing a summary of your situation and providing information about relevant counseling organizations.

* Informational flyers on different consultation desks and support programs will also be available for people to take.

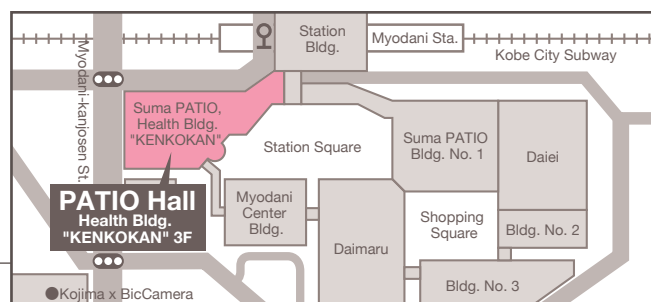
Wednesday,
December 27

13:00~19:00 (Final entry/18:30)

PATIO Hall (Suma PATIO, Health Bldg. "KENKOKAN" 3F)
2-2-7 Nakaochiai, Suma-ku

★ From (Kobe City Subway) Myodani Station 1-min. walk

First
500
people



Thursday,
December 28

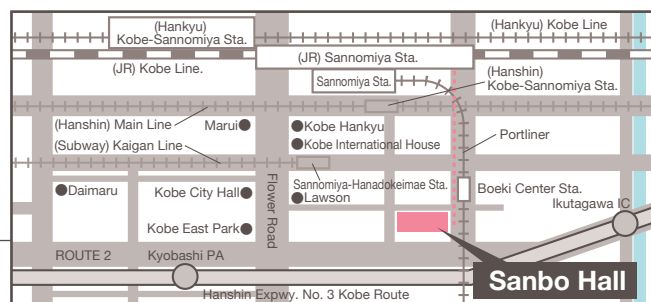
13:00~19:00 (Final entry/18:30)

Kobe Sanbo Hall, 1F Large Exhibition Hall
5-1-32 Hamabe-dori, Chuo-ku

★ From (JR) Sannomiya Station, East Gates 10-min. walk

★ From (Portliner) Boeki Center Station 1-min. walk

First
1,500
people



* Parking is not available at these locations. Please use public transportation.

Important considerations before coming to this event:

- Do not come if you have symptoms such as a fever, coughing, or sore throat.
- Please understand that we cannot cater to individual grocery requests, such as setting aside certain products, delivery, or adjusting for allergies.
- Selling or giving away the products provided at this event is prohibited.
- Japanese sign language & English-language interpreters will be present at this event.

KOBE
CITY of DESIGN